

Faculty:

Radiologists

- **M. Francone**
Professor of Radiology, Sapienza University, Rome, Italy
- **C. Loewe**
Professor of Radiology, Medical University of Vienna, Austria
- **M. Hrabak Paar**
Assist. Prof., University Hospital Center Zagreb, University of Zagreb School of Medicine, Zagreb, Croatia
- **G. Pontone**
MD, PhD, FESC, FSCCT, Cardiologist & Radiologist, Centro Cardiologico Monzino, Milano, Italy
- **K. Chatoupis**
MD, PhD, Radiologist, National and Kapodistrian University of Athens, Aretaieion Hospital, Greece
- **A. Kallifatidis**
Radiologist, MD, EBCR, St. Luke's Hospital, Thessaloniki-Greece
Radiology Department CHU St. Etienne, France
- **N. Kelekis**
Professor of Radiology, Medical School, National and Kapodistrian University of Athens, Greece
- **K. Kouskouras**
Radiologist, Assistant Professor of Radiology, AHEPA University Hospital, Thessaloniki, Greece

- **I. Mastorakou**
Cardiac Radiologist, MD, MSc, PhD, EBCR, Director Imaging Dept, Onassis CSC, Athens, Greece
- **K. Michailidis**
MD, EBCR, Cardiovascular radiologist, Affidea Cardiac Center, Kozani, Greece
- **K. Pagonidis**
MD, Radiologist, Research Assistant Radiology Department of University Hospital of Heraklion

Cardiologists

- **P. Dardas**
MD, FESC, Consultant Interventional Cardiologist, Cardiac Catheterization Laboratory, St. Luke's Hospital, Thessaloniki, Greece
- **I. Ninios**
MD, PhD, Interventional Cardiologist, Cardiac Imaging, St. Luke's Hospital, Thessaloniki, Greece
- **C. Papadopoulos**
Ass.Prof. of Cardiology, 3rd Cardiology Dept, Hippokrateio University Hospital, Aristotle University of Thessaloniki, Greece
- **E. Theoflogiannakos**
MD, PhD, Cardiologist, St. Luke's Hospital, Thessaloniki, Greece
- **D. Zioutas**
MD, PhD, FESC, Interventional Cardiologist, St. Luke's Hospital, Thessaloniki, Greece

Nuclear Medicine

- **E. Moravidis**
Assoc. Prof. Dept of Nuclear Medicine, G.Papageorgiou Hospital, Aristotle University Medical School, Thessaloniki, Greece

Physicists

- **N. Maganaris**
Medical Physicist, Msc, St. Luke's Hospital, Thessaloniki
University Hospitals Plymouth, NHS Trust
- **F. Santini**
PhD, Physicist University of Basel Hospital

Engineer

- **L. Bilalis**
BEng, MSc. Design Engineer of 3D diagnostic models

Circle Cardiovascular Imaging Inc

- **K. Chasapidis**
MSc Biomed Eng

Local Organizing Committee

- **A. Kallifatidis**
Radiologist, MD, EBCR, St. Luke's Hospital, Thessaloniki-Greece
Radiology Department CHU St. Etienne, France
- **A. Prousalis**
PhD, Radiologist St. Luke's Hospital, Thessaloniki, Greece

Date:
September 27,28,29

Registration without accommodations:

250€
Radiologists, Cardiologists, Other imaging subspecialties, Physicians

200€
Residents

180€
Technologists, Technicians & Physicists

Registration with 3 nights accommodations

495€
Radiologists, Cardiologists, Other imaging subspecialties, Physicians

445€
Residents

425€
Technologists, Technicians & Physicists

Supported by



Organized by

Radiological Society of Northern Greece

Endorsed by



For more information:

Contact Alexandros
alexandros.kallifatidis@yahoo.gr

Contact Circle
info@circlevci.com

Register at

http://www.globalevents.gr/conferences/stlukes2018_registration.pdf



THESSALONIKI. 50A Stadiou Str. 55535 Pylea, Thessaloniki. T: +302310 247743, +302310 247734 F: +302310 247746. Email: info@globalevents.gr

ATHENS. 2 Valsestra str. & 168 A, Syngrou Avenue, 17671 Kallithea, Athens, Greece. T: +30210 3250260, F: +302310 247746. Email: athens@globalevents.gr

www.globalevents.gr



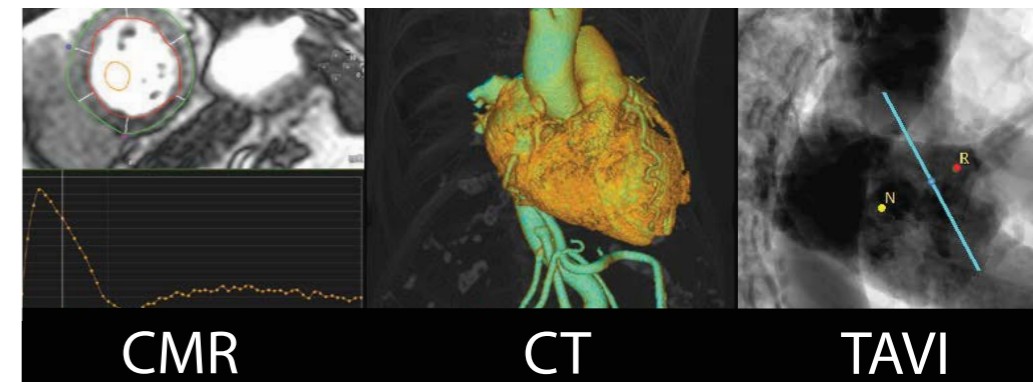
Cardiovascular MRI & CT with Clinical Correlation,
Learn from the experts

Hands on Training and Lectures

Join us for this 3 day international course at St. Luke's Hospital in Thessaloniki-Greece, a seminar which offers real life situational training, from industry experts.

September 27th-29th, 2018

Limited Spots Available
the course will be held in English



CMR

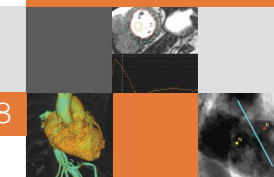
CT

TAVI

http://www.globalevents.gr/conferences/stlukes2018_registration.pdf

http://www.globalevents.gr/conferences/stlukes2018_registration.pdf

PROGRAM



PROGRAM

Thursday September 27 th , 2018	
08:45 - 09:00	Welcome-Opening
09:00 - 09:25	Cardiac CT: Technical basics, Protocols, Dose reduction strategy N. Maganaris
09:25 - 09:50	Cardiac MRI: Principles, Sequences, Parametric Mapping F. Santini
09:50 - 10:15	Cardiac MRI: Dealing with Artefacts, MRI inPatients with Implanted Devices F. Santini
10:15 - 10:40	Safety considerations in contrast agents administration: myth or reality? K. Chatoupis
10:40 - 11:00	Coffee Break
11:00 - 11:20	Ischemic heart disease-Clinical update E. Theoflogiannakos
11:20 - 11:45	CT in CAD M. Hrabak Paar
11:45 - 12:10	Coronary Plaque Characterisation with CT K. Michailidis
12:10 - 12:35	Plaque characterization: IBUS D. Zioutas
12:35 - 13:00	Advanced Stress techniques I. Ninios
13:00 - 13:25	CMR in CAD A. Kallifatidis
13:25 - 14:30	Lunch
14:30 - 16:30	Clinical scenarios-Interactive cases, My most difficult cases, My worst cases Moderator: I. Mastorakou, C. Papadopoulos
16:30 - 17:00	Coffee Break
17:00 - 17:30	Acute chest pain and outcome prediction after STEMI C.Loewe
17:30 - 19:30	Hands on with Circle Cardiovascular Imaging Inc K. Chasapidis

PROGRAM

Friday September 28 th ,2018	
09.00 - 09.25	CMR in cardiomyopathies M. Francone
09:25 - 09:50	Athlete's heart M. Francone
09:50 - 10:15	Valve disease: 3D echo I. Ninios
10:15 - 10:40	Shunt quantification: CMR N. Kelekis
10:40 - 11:00	Valve disease: CT C. Loewe
11:00 - 11:30	Coffee Break
11:30 - 11:55	Myocarditis M. Francone
11:55 - 12:20	Endocarditis-Sarcoidosis. The role of Nuclear Medicine E. Moravidis
12:20 - 12:45	Cardiac tumors and tumor-like masses A. Kallifatidis
12:45 - 13:05	Pericardial disease M. Hrabak Paar
13:05 - 13:30	CT in small children/newborns with congenital heart disease C. Loewe
13:30 - 13:45	Discussion
13:45 - 15:00	Lunch
15:00 - 15:25	3D Printing L. Bilalis
15.25 - 17.30	Clinical scenarios-Interactive cases, My most difficult cases, My worst cases Moderator: K. Kouskouras, I. Ninios, K. Pagonidis
17.30 - 18.00	Coffee Break

PROGRAM

Friday September 28 th ,2018	
18.00 - 20:00	Hands on with Circle Cardiovascular Imaging Inc K.Chasapidis
20.30	Dinner
Saturday September 29 th ,2018	
09:00 - 10:00	CT FFR, CT Perfusion, Mapping in CAD G. Pontone
10:00 - 11:00	Multimodality Imaging in Valve interventions Pre-TAVI evaluation: the role of CT A. Kallifatidis TAVI interventional procedure P. Dardas Mitraclip procedure I. Ninios
11:00 - 11:30	Coffee break
11:30 - 12:15	Myocardial Strain: Echo - I. Ninios CMR - A. Kallifatidis
12:15 - 12:30	Discussion
12:30 - 14:30	Hands on with Circle Cardiovascular Imaging Inc K. Chasapidis
	End of the Seminar